



Unil
UNIL | Université de Lausanne

EPFL

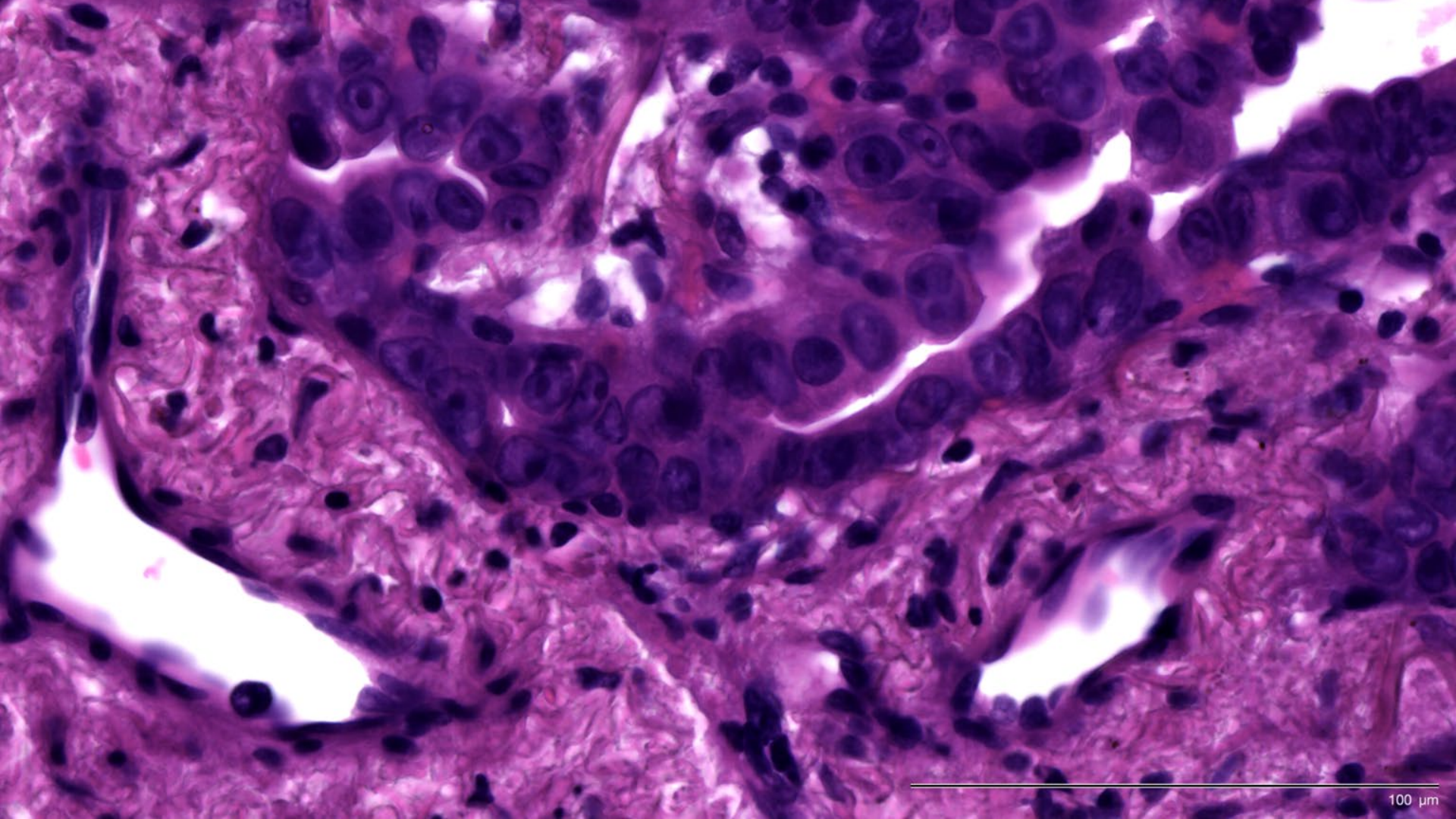
La médecine spatiale : la prochaine frontière de l'oncologie de précision

RAPHAEL GOTTARDO, PHD

Director and Professor
Biomedical Data Science Center
Lausanne University Hospital and University of Lausanne

Adjunct Professor, Life Sciences, EPFL

Group Leader, Swiss Institute of Bioformatics



Une équipe au cœur de l'innovation



PROF. SOLANGE PETERS
HEAD OF ONCOLOGY



PROF. LAURENCE DE LAVAL
HEAD OF PATHOLOGY



DR. KRISZTIAN HOMICKO
CLINICAL HEAD/MEDICAL ONCOLOGY



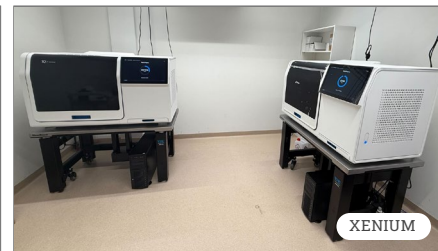
PROF. RAPHAEL GOTTARDO
HEAD OF BIOMEDICAL DATA SCIENCE



PROF. MARIANNA RAPSO MANIKI
AI/ML BIOMEDICINE



TRANSLATIONAL RESEARCH ECOSYSTEM



XENIUM



VISIUM



LUNAPHORE COMET

